

# State of Wyoming Corner Record

(In compliance with the **CORNER PERPETUATION AND FILING ACT**, Wyoming Statutes, 1997 Section 33-29-140 et. seq., and the Rules and Regulations of the Board of Professional Engineers and Professional Land Surveyors)

AFFIX RECORDING LABEL HERE



RECP #: 764322

RECORDED 10/25/2019 AT 2:16 PM BK# 2644 PG# 542  
Debra K. Lee, CLERK OF LARAMIE COUNTY, WY PAGE 1 OF 1

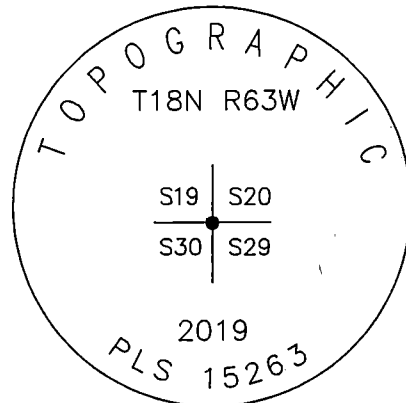
Reverse side of this form may be used if more space is needed.

Record of original survey and citation of source of historical information (if corner is lost or obliterated). Description of corner monumentation evidence found and/or monument and accessories established to perpetuate the location of this corner. Sketch of relative location of monument, accessories, and reference points with course and distance to adjacent corner(s) (if determined in this survey). Method and rationale for reestablishment of lost or obliterated corner.

## GLO Record

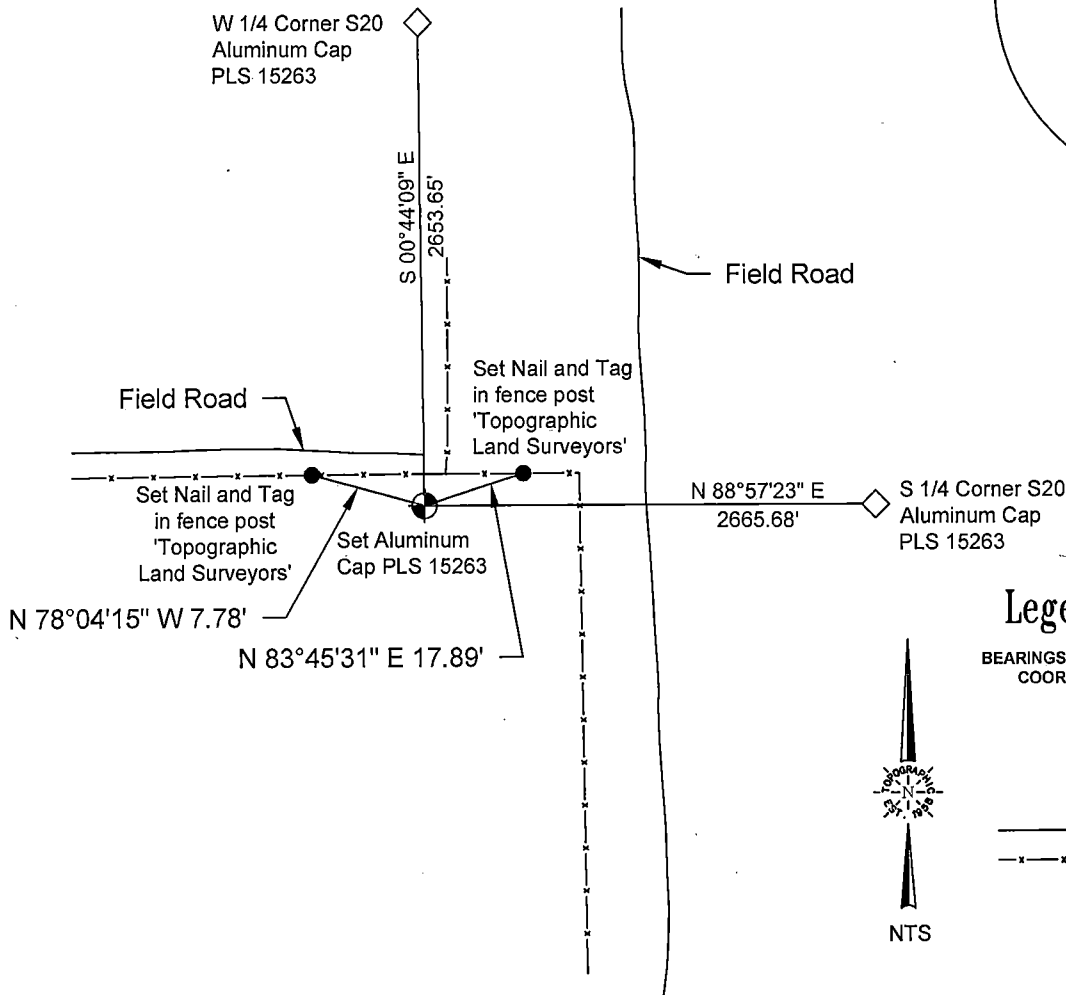
1873 Survey of subdivisional lines T18N R63W 6th P.M.  
Set a 16x12x6 sandstone 10 inches deep marked with 2 notches on the south side and 5 notches on the east side.

## Monument Inscription



## Monument Description

SET: 2-1/2" ALUMINUM CAP ON 30 INCH LONG 3/4" REBAR, MARKED AS SHOWN.



## Legend & Information

BEARINGS ARE BASED UPON WYOMING STATE PLANE COORDINATE SYSTEM NAD 1983, EAST ZONE

ALL DISTANCES ARE GRID

- FOUND MONUMENT AS DESCRIBED
- CORNER SET THIS SURVEY
- SECTION LINE
- FENCE

Date of Field Work: September 27, 2019

Topographic Land Surveyors Office Reference No.: 130168

## Cross Index Plat

1	2	3	4	5	6	7	8	9	10	11	12	13	14	15	16	17	18	19	20	21	22	23	24	25	
A																									A
B																									B
C	6			5				4					3					2							C
D																									D
E																									E
F																									F
G	7			8				9					10					11							G
H																									H
J																									J
K																									K
L	18			17				16					15					14							L
M																									M
N																									N
O																									O
P	19			20				21					22					23							P
Q																									Q
R																									R
S																									S
T	30			29				28					27					26							T
U																									U
V																									V
W																									W
X	31			32				33					34					35							X
Y																									Y
Z																									Z
	1	2	3	4	5	6	7	8	9	10	11	12	13	14	15	16	17	18	19	20	21	22	23	24	25

Firm/Agency, Address



**Topographic Land Surveyors**  
520 Stacy Court, Unit B  
Lafayette, CO 80026  
(303)666-0379

This corner record was prepared by me or under my direction and supervision.

SEAL & SIGNATURE



Date Prepared: 10/11/2019

Corner Name: SW Corner Section(s): 20 T 18 N, R 63 W, 6th P.M. LARAMIE County, Wyoming Cross-Index No.: R-5